

Arts Strategy

the story so far

Jurassic Coast Arts Strategy Update

by Sue Kay, Chair Creative Coast Group

It is now nearly a year since the Jurassic Coast Arts Strategy was launched and some of you will doubtless be wondering what has happened in the interim. This newsletter is by way of an update on progress so far and an indication of some of the exciting things that are on the horizon.

As is always the case with strategies, it takes a little while to get all of the necessary infrastructure in place to make sure that things can happen and be sustained. The Creative Coast Steering Group (of which I became Chair in May 2006) is charged with taking the work of the strategy forward and has led on high-level discussions with Arts Council England South West (ACESW) and officers at the Department for Culture, Media and Sport in London. As a result, an initial funding package has been put together, supported by both Dorset and Devon County Councils and ACESW and in the next month the group will be appointing a Strategic Development Manager to lead on delivery of a number of key objectives. Initially appointed for a year, it is envisaged that within that time we will be able to enhance the funding package to make this development work more sustainable.

In summary the post will be responsible for:

- Creating opportunities for artists to produce new works inspired by the Jurassic Coast, and
- Enabling the development of arts projects, which can enhance the interpretation of the Jurassic Coast and the conservation, scientific, educational and tourism actions arising out of the WHS Management Plan.

As you can imagine, there is a long list of tasks for the appointee to be getting on with and the important thing is that this represents an exciting new phase in the development of arts work along our 95 mile stretch of World Heritage coastline.

There is also a small project budget to attract partnership funding and to allow a number of key actions to begin with the minimum of delay. Please don't all rush at once to ask us for money at this point though – details of the initiatives to be taken forward will be made available as soon as they are finalised.



Dorchester Museum



Seaton Labyrinth



Exmouth Seafront



RHS Chelsea 2006

Things have not exactly been idle in other areas either. Some of you will be aware, that the Jurassic Coast Arts Strategy is now firmly embedded in ACESW's agenda for 2006-2008 and is a key part in the region's emerging plans for the Cultural Olympiad (2008-2012) and the 2012 Olympic Games and Paralympic Games. Through Government Office for the South West we are also hoping to entice the Secretary of State for Culture, Media and Sport to take a walk along the Jurassic Coast and appreciate for herself the importance of the arts to its future development and interpretation.

Herbie Treehead's dinosaur circus



Following on from the strategy's official 'launch' at the Lyme Regis Fossil Festival in April last year, a number of arts projects have been developed along the coast. All of these will enhance the ability of local, regional and national artists to tap into the vital networks so essential for taking the strategy forward as

well as giving local residents and visitors the chance to witness and participate in some spectacular events and happenings. In addition, of course, all of them fly the flag for cultural activity as a whole and the important role it plays in delivering the Interpretation Action Plan for the World Heritage Site.

In my role as Chair of the Creative Coast Group I attend the WHS Steering Group and have been able to pursue a number of useful links with colleagues working in science and conservation and museums, not least to ensure the arts are full integrated in the work of other WHS working groups too! Other Creative Coast Group members have also been active in getting the message across at a range of seminars and gatherings and I am grateful to them for their efforts and enthusiasm. I know that there is a huge interest in partnership working to really enhance the profile of the site.

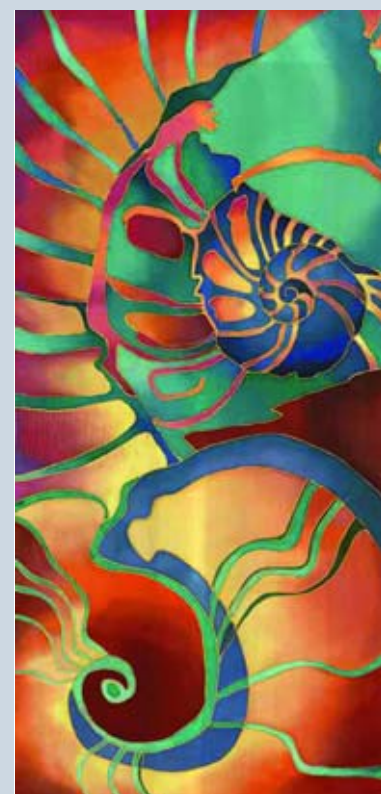
I look forward to working with the new Strategic Development Manager and my Creative Coast Group colleagues to help ensure that artists, visitors, local communities and all those who so generously gave of their time to the strategy consultation process, see the development of the Jurassic Coast as a unique location of international significance.

Best Wishes,
Sue Kay Chair, Creative Coast Group

For further information on the wider work undertaken along the Jurassic Coast or to download the Jurassic Coast Arts Strategy, visit www.jurassiccoast.com


Alternatively contact the Jurassic Coast Team on jurassiccoast@dorsetcc.gov.uk or 01305 225101

Some thin




Things already happening. . .

An artist and scientist residency at Durlston Country Park, Swanage

Cleo Evans, Visual Arts Development Officer at Dorset County Council, has been working in partnership with Bergit Arends, Curator of Special Projects at the Natural History Museum in London to develop a pilot collaborative project between artists and scientists at Durlston Country Park. The project has been supported financially by Arts Council England South West. Over 80 artists responded to the brief – some from as far away as Florida and Berlin! 6 artists were shortlisted to work up proposals on how they would use this residency; what research they will undertake; which scientists they would like to work with and what outcomes they are proposing. Interviews were held just before Christmas and an artist, Abigail Reynolds, was appointed. 

Exmouth 8th Annual Sand Sculpting Competition Sunday 27th May 2007


The overall theme for this year's annual sand sculpting competition in Exmouth is 'The Jurassic Coast'. This will include the formation of a new Jurassic Coast Entry Class for World Heritage Site inspired sculptures. There will be prize categories for the best overall Jurassic sculpture and the best children's Jurassic sculpture.

Also included at this event will be the creation of Exmouth's very own dinosaur, the '*Junkasaurusexe*!' He (or she) will be made on the green by the event registration tent and coordinated by 3D artist Darrell Wakelam from Lyme Regis. It will take two days to create with a final procession at the Manor Gardens on Monday 28th at 3pm. 

Jurassic Coast Banners




In 2005, Exmouth Community College students worked with an artist to develop Jurassic Coast themed banners, based on six unique designs, which are now on display at six locations throughout the town. These were seen as a great success by the local community and visitors alike and now Seaton is developing a similar project. Specially designed lighting columns have been installed along the seafront

in the town this winter and eight of them incorporate a bracket ready for the banners to be fitted. Working with local schools, an artist and other partners, the Gateway Town Group will develop a distinctive design for Seaton. 



Artist involved with concept designs for the redevelopment of Durlston Castle, Swanage

Once again with financial support from Arts Council England, an artist was appointed to work on concept design with the architect for the redevelopment of Durlston Castle, MJ Long. Lulu Quinn was appointed from the outset of the re-development work and funding has been attained to allow her to continue her work right through part two of a bid to secure funding from the Heritage Lottery Fund.

Just before Christmas the HLF announced that the bid had been successful and awarded the scheme £3.2 million. This means that a significant presence for artists and their work will be maintained and enhanced at Durlston. The experience gained from this project will be used as further capital projects emerge along the coast. 



Inside Out International Festival September 2007

With an eye on the Cultural Olympiad, Dorset Promoters Consortium, led by Activate, the dance and theatre development agency for Dorset, has been fundraising and developing plans for a major festival of international performance work to take place in September 2007 - Inside Out. Arts Council England, the Heritage Lottery Fund and Dorset County Council have very generously supported this. Although the festival is a Dorset county wide event significant performances will take place along the coast – most notably at Weymouth and West Bay – and the Creative Coast Group has added its vocal support to the event. Cleo Evans will act as co-ordinator working with the event directors Bill Gee and Simon Chatterton.



The Heliosphere by Dream Engine, programmed to launch the Creative Coast strategy at Lyme Regis Fossil Festival. The only natural World Heritage Site to have an Arts Strategy. Arts Council/ Jim Wileman



Carmen Funebre by Teatr Biuro Podrozy. Polish company that will be performing at Weymouth's Nothe Fort for the county wide Inside Out Festival in September 2007

Arts in protected landscapes

Part of the work of the new Strategic Development Manager will be to develop a code of practice for artists working on the World Heritage Site. As a useful aid to such work Arts Council England South West, in partnership with the region's Areas of Outstanding Natural Beauty and the National Park Authorities, has produced a guide "*Natural Partners – arts in protected landscapes*". Further details of this can be obtained at www.artinlandscapes.org.uk

